

Please read and follow the instructions carefully. You may also scan the QR code below to view the operation video:



Scan the QR code to download the app



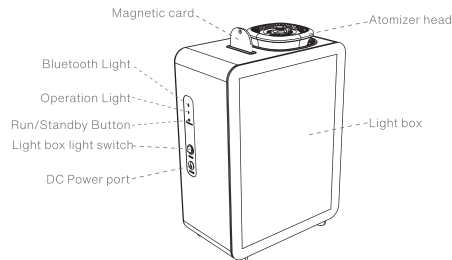
Equipment Operation Video



Equipment after-sales Video

| PRODUCT INFORMATION |                 |                                   |
|---------------------|-----------------|-----------------------------------|
| Size: 357×246×141mm | Weight: 5.5Kg   | Power: 16W                        |
| Input: DC 12V/2A    | Capacity: 500ml | Coverage: 2000-3000m <sup>3</sup> |

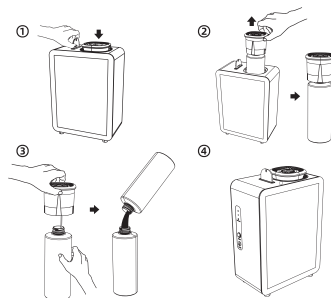
| WHAT'S INCLUDED                 |                  |                          |                  |                     |
|---------------------------------|------------------|--------------------------|------------------|---------------------|
|                                 |                  |                          |                  |                     |
| Scent Diffuser (with bottle) x1 | Power adapter x1 | Gasket x1                | Atomizer core x1 | Magnetic card x1    |
|                                 |                  |                          |                  |                     |
| External connecting tube x1     | Wrench x1        | Quick-connect fitting x1 | User Manual x1   | After-sales card x1 |



01

## 1 INSTALLATION

Unlock the atomizer head with the magnetic card, then take out the entire atomizer head. Next, unscrew the essential oil bottle in the direction of the arrow, add an amount of essential oil, and then reassemble them back into the device.



**WARNING:** After adding essential oil, the device must always be kept upright and facing upwards. It should not be inverted or tilted, as this may damage the internal components of the device.

## 2 BUTTON CONTROL

### ◆ Sound prompt

The device emits a "beep" when receiving signals or upon any valid button operation.

### ◆ Factory Reset

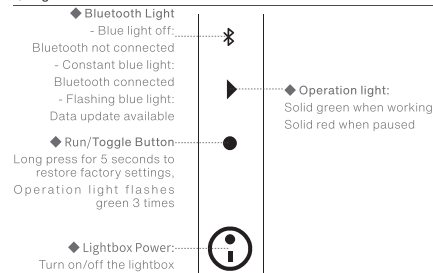
Long - press the "Run/Toggle" button for 5 seconds to restore the factory settings, the operation light will flash green three times and the buzzer will sound three times.

Short press the "Run/Toggle" button: Run/Standby

**Factory - set parameters:** 60 seconds on, 200 seconds off, operating time Monday to Sunday from 08:00 to 22:00.

02

### ◆ Light & Button



## 3 APP CONTROL (BLUETOOTH MODE)

After Bluetooth connection, the device immediately switches to Bluetooth mode and operates according to the Bluetooth settings:

Scan the QR code with your phone to download and install the "Art Diffuser" APP → Go to the page → Select "Start Adding" → Go to the "Search and Connect" page, search for and connect to the device.

**Note:** It is recommended to allow all APP permissions, including location services, Bluetooth connection, and sending notifications.

◆ **All devices** | Available devices within the phone's Bluetooth range are displayed in the "All Devices" group, click on any device icon to connect to that device, after successful connection, it will jump to the device details page.

◆ **My Devices** | Devices that have been connected are displayed in the "My Devices" group, devices not currently within Bluetooth range are shown in gray.

### ◆ Device Status Page:

⏻ Toggle: The phone can turn the device's operating status on/off with one click.



⏻ Fan's lock: Turn on/off the button's fan.

⚙️ Factory Reset: The phone can reset to factory settings with one click.

### ◆ Working Mode

Click "Add" to create up to 5 working modes, click the switch button in the upper right corner of the mode window to turn the mode on/off, long press the mode window to select delete mode, click the mode window to customize and edit days of the week, time periods, and frequency.

-**Day Setting** | Select the desired days.

-**Time Period Setting** | Adjust the dial to select the working time period.

**Note:** If the time period needs to cross 00:00, it must be set as two consecutive time periods (the end time cannot be less than the start time), for example, 23:00~02:00, set as two groups: 23:00~23:59, 00:00~02:00.

-**Frequency Setting** | Adjust the dial to select the working frequency.

Operating time range: 5-200s; Pause time range: 20-600s.

04

03

## 4 CONCENTRATION & CONSUMPTION

| Grade                 | On time(s)    | Pause time(s) | Consumption (g/h) |
|-----------------------|---------------|---------------|-------------------|
| Minimum concentration | 5s            | 600s          | 0.05              |
| Medium concentration  | 100s          | 300s          | 1.62              |
| Maximum concentration | 200s          | 20s           | 5.89              |
| 100% Text             | Continuous On | 0             | 6.48              |

**Note:** The data is for reference only. The amount of mist produced by different essential oils may vary. The data above is based on the essential oil used in the test: Park Hyatt (density  $\geq 0.95$ ).

## 5 MAINTENANCE AND UPKEEP

Scent diffusers require regular cleaning and maintenance every 1-2 months when in normal use. Below is the method for cleaning.

### ◆ Spray nozzle cleaning

\* Use 95% "alcohol + cotton swab" to gently wipe the nozzle, removing the residue of essential oil liquefaction

\* Cleaning the atomizer core can be cleaned by soaking a cotton swab in 95% alcohol and wiping the core with it, or by soaking the atomizer core in alcohol and then allowing it to dry.

### ◆ Oil bottle cleaning

\* Before changing essential oils each time, clean the oil bottle with alcohol and allow it to dry completely.

When equipment is not used for a long period, it is necessary to clean the internal nozzles and other components thoroughly.

\* Add 95% industrial alcohol to the empty bottle.

\* Turn on the device and run it for 10-15 minutes.

\* Turn off the device, pour out the alcohol from the bottle and let it dry before reassembling the device.

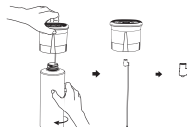
\* Power off storage, unplug the power supply, to prevent electrostatic damage to the circuit.

## 6 REPLACE THE ATOMIZER CORE

◆ The atomizer head assembly consists of the atomizer head, atomizer assembly (Atomizer core, filter mesh, and oil suction tube), and essential oil bottle.

◆ Operation steps: First, unscrew the essential oil bottle, wipe the essential oil clean with a dry cloth, use a clamping tool such as tweezers to remove the old atomizer core, replace it with a new one, then reassemble all components into the device.

◆ **Hint:** Please note that all components must be tightened to prevent them from falling off.



## 7 WARRANTY POLICY

◆ Replacement/Maintenance is guaranteed for one year from the date of purchase.

If you need to replace components for free within the warranty period, the device must be under normal use conditions and the failure must be due to manufacturing reasons to provide warranty. During the warranty period, component fees covered by the warranty are waived. This warranty does not include consumables such as oil. To obtain warranty service, please be sure to contact the after-sales department during the warranty period and present the original or copy of the valid warranty card and the official commercial invoice to the relevant departments.

◆ The following situations do not enjoy free warranty service:

- ① Damage & problems caused by Accidents & Fire!
- ② Not used properly and wrong operation.
- ③ Repaired by non-professionals, causing some parts damaged.
- ④ Damaged during transportation.
- ⑤ Without our warranty card.
- ⑥ Without proper cleaning for a long time.
- ⑦ The machine is overworked.
- ⑧ Machines & Parts not from us.
- ⑨ Machines not purchased from official channels.
- ⑩ Send the machines back without permit from the manufacturer.



## SAFETY PRECAUTIONS FOR USE

### ◆ Safe use

① After loading the essential oil, the device must always remain upright and facing upwards, not inverted or tilted, otherwise it may damage the internal components of the device.

② During the transportation of the equipment, it is necessary to empty the essential oils from the bottles to avoid oil leakage and damage to the equipment.

③ This device cannot be used for air humidification and cannot be filled with water;

④ Please place it in a location inaccessible to children and pets.

⑤ Store in a dry and cool place, do not use this device in high temperature or humid environments.

### ◆ Forbidden

① Do not cover the equipment in use.

② Prohibit the use of overloaded power outlets, power cords, or damaged power plugs, as this may damage equipment or even cause fires.

③ Essential oils should not be ingested and should be kept away from contact with the eyes. In case of eye contact, rinse thoroughly with plenty of water; if there is a strong sensation, seek medical attention immediately.

④ Please do not disassemble the equipment. If any abnormalities are found in the product, please contact us promptly.

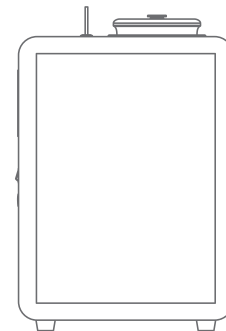
# User Manual



## Smart Scent Diffuser

Lightbox Model

*Scent machine*



[ Please read the manual carefully before use and keep it properly ]